

Pictured with aftermarket lighting package.



**GT**  
DELUXE

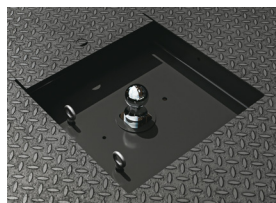
## STEEL TRADESMAN DELUXE TRUCK BED

At PJ Truck Beds, your goals drive us to deliver the ultimate towing truck body. The GT Steel Tradesman Deluxe offers exceptional toolbox storage and premium towing capacity, featuring front utility boxes with optional custom drawers for efficient access. With our independently-rated B&W hitches, you can easily hook up your camper and enjoy the open road with family.

### FEATURES & OPTIONS

<b>LENGTHS</b>	84", 8'6", 9'4", 11'4"	<b>12V TRAILER PLUG</b>	Round 7 Pin RV Style in GN Box, Rd 7 Pin RV Style/4 Way Flat on Rear
<b>HEADACHE RACK</b>	Steel Tube	<b>REAR LIGHTING</b>	6" Glow LED Oval
<b>HEADACHE RACK LIGHTING</b>	6" Glow LED Oval	<b>LIGHT BOX</b>	Steel
<b>DECK</b>	1/8" Steel Tread Plate	<b>MARKER LIGHTING</b>	Bullet DOT Approved LED
<b>FRAME RAILS</b>	4" Structural Channel Steel	<b>TOOLBOX</b>	(2) Large Front Utility Toolboxes; (2) Low-Profile Rear Toolboxes; (2) 1/2 Length Shovel Boxes; Opossum Belly
<b>CROSSMEMBERS</b>	3" Steel Channel	<b>TOOLBOX HANDLES</b>	Black T-Handle Compression
<b>REAR SKIRT</b>	Solid One Piece w/Tapered Corners for Turning Radius with Recessed Footholes	<b>FENDERS</b>	Steel
<b>GN HITCH</b>	30K lb. B&W Gooseneck Hitch w/Welded Ball	<b>SIDE STEPS</b>	In Front of and Behind Fender
<b>BP HITCH</b>	24K lb. B&W Hitch w/2-1/2" Receiver Tube	<b>TIE-DOWNS</b>	(4) 18" Airline Track Tie-Downs; (4) Attachment Rings
<b>FUEL FILL</b>	Angled		

**OPTIONAL FEATURES INCLUDE:** 3/16" Heavy Duty Deck; 30K lb. B&W Gooseneck Hitch with Turnover Ball (Required for 5th Wheel Capacity); Cargo Light; Bale Spikes; Color Primer Only; CTech or Stellar Drawers in Front Utility Toolboxes; Stainless Fenders



30K lb. B&W Gooseneck Turnover Ball



CTech Drawers



Stellar Drawers



(580) 564-7537

PJTRUCKBEDS.COM

